



Overview:

- 1,509 sqft
- 3 bedrooms
- 2 baths
- Walk-in pantry
- Additional Storage

Thurman Homes' philosophy is to build affordable, efficient and sustainable homes that offer opportunity to a range of buyers. They build in Whisper Valley, Austin's premier sustainable community, providing zero net energy capable homes.

PLAN 1509



Elevation A

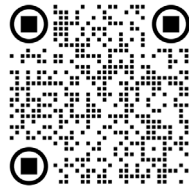


Elevation B

ThurmanHomesTexas.com

info@ThurmanHomesTexas.com

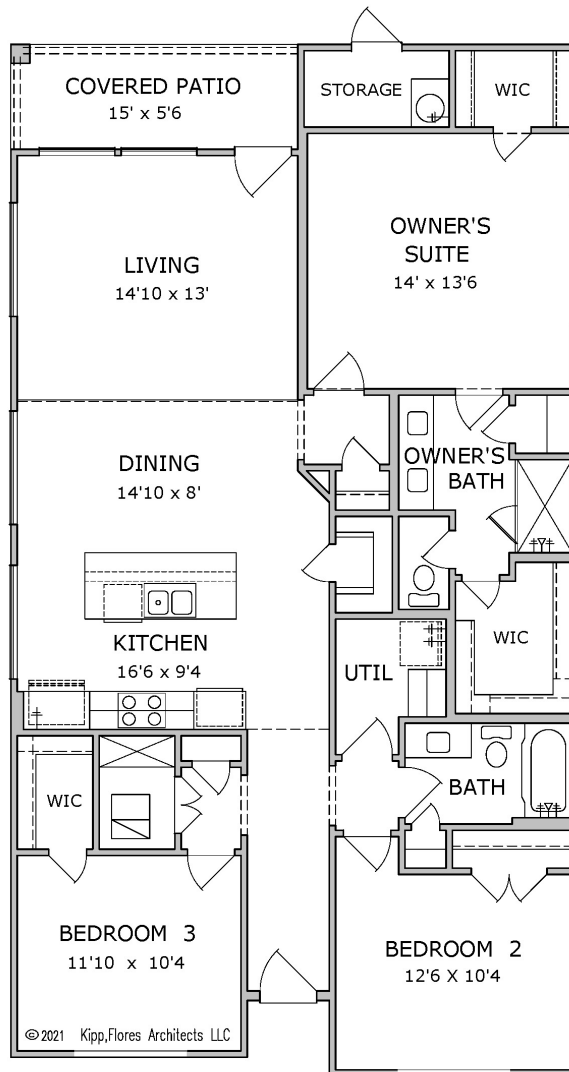
(512) 925-4647



Details that make the difference:

- All metal interior and exterior railings per plan
- Refrigerator included with the appliance package
- Covered patio
- 3/4-inch casings and baseboards with no quarter-round
- Interior and exterior storage closets
- Soft-close cabinet drawers and doors
- Designer selections from Camille Carpenter, owner of CC Studios

PLAN 1509



Thurman Homes reserves the right to adjust plans and specifications to provide the best possible product. Dimensions, images and footages provided herein are preliminary and may not reflect final plans.



ThurmanHomesTexas.com

info@ThurmanHomesTexas.com

(512) 925-4647