

# Blueberry Meadows

DORA / WEST JEFFERSON



## ENERGY SMART NEW HOMES

*Birmingham's Leading Energy Efficient Garden Home Builder*



The Alabama

\$219,900



The California

\$219,900



The Arizona

\$224,900

**NO MONEY DOWN 100% USDA FINANCING**  
**BUILDER PAYS \$2500 TOWARDS CLOSING COSTS**

*For more information call or email:*

**GEORGE HOLMAN**

**205.222.9892**

**GEORGE@ENERGYSMARTNEWHOMES.COM**

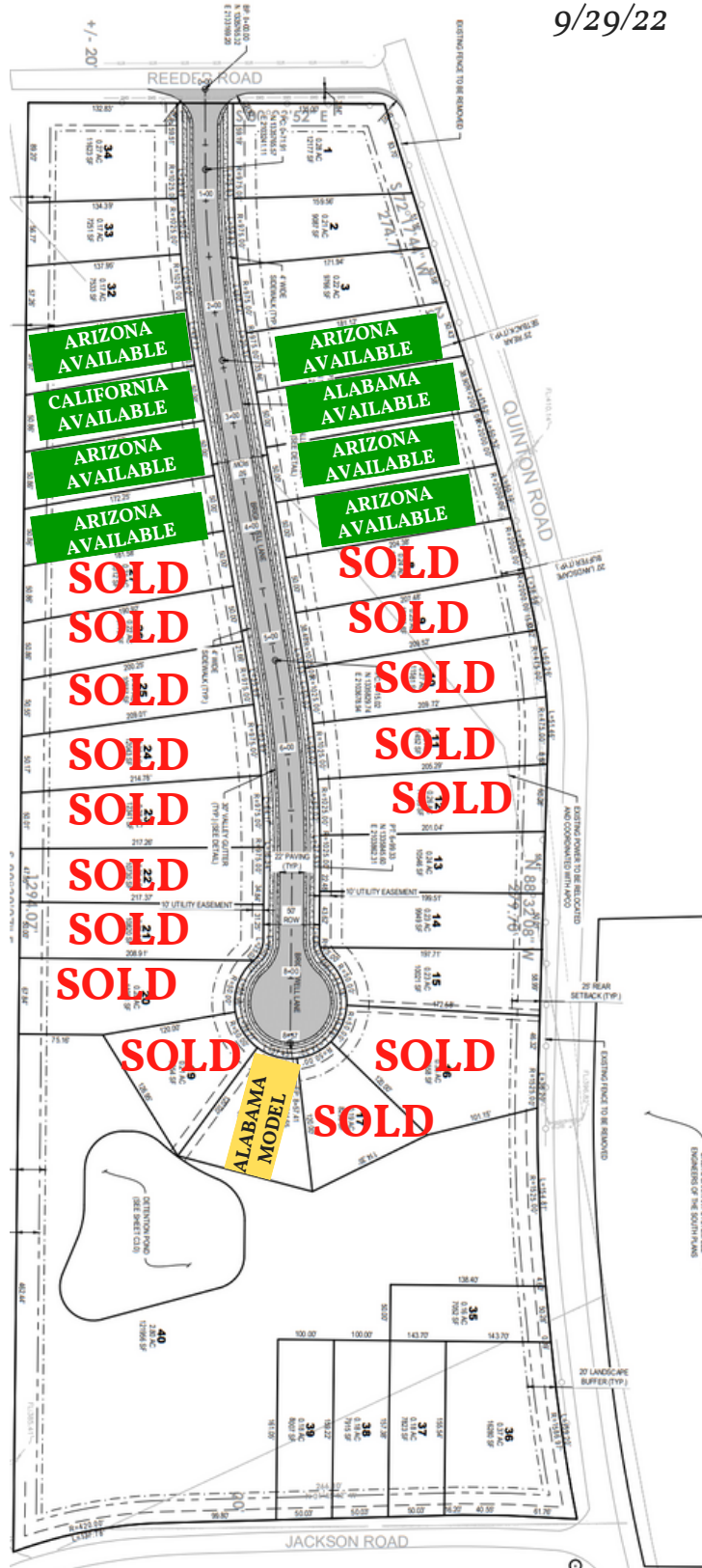


View all Plans & Neighborhoods at  
[www.EnergySmartNewHomes.com](http://www.EnergySmartNewHomes.com)

# Blueberry Meadows

DORA / WEST JEFFERSON

9/29/22

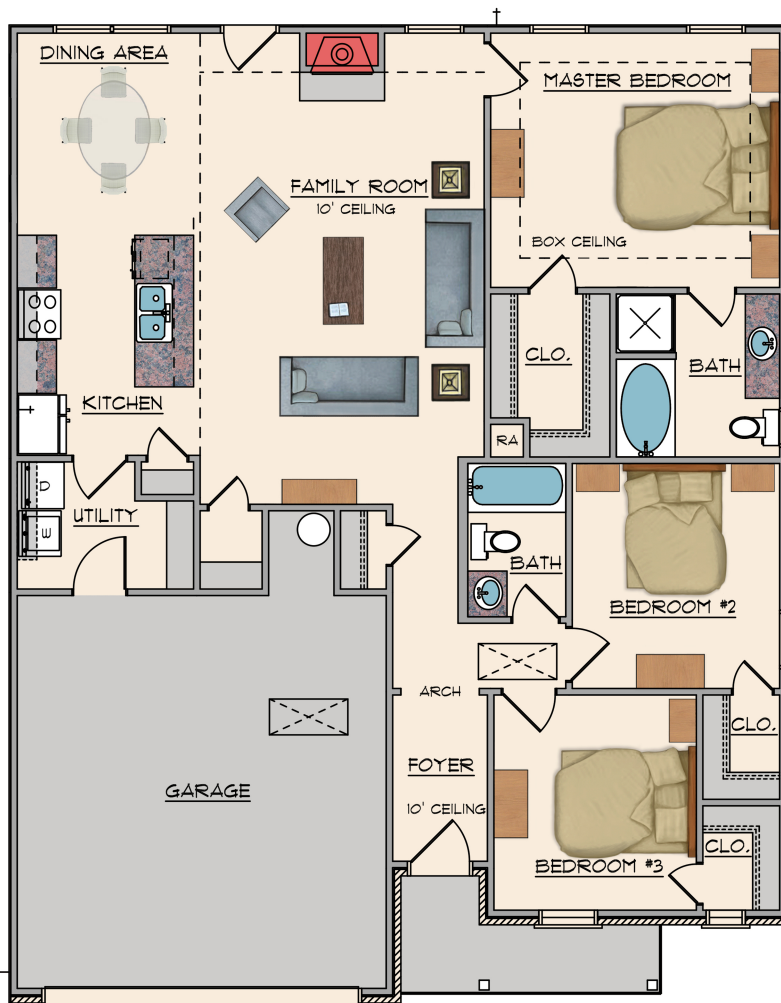


Directions: From Birmingham, I-22 W to Exit 8I (West Jefferson). Right on Snowville Brent Road. Left on Quinton Road. See houses on your left.



# THE ALABAMA

\$219,900



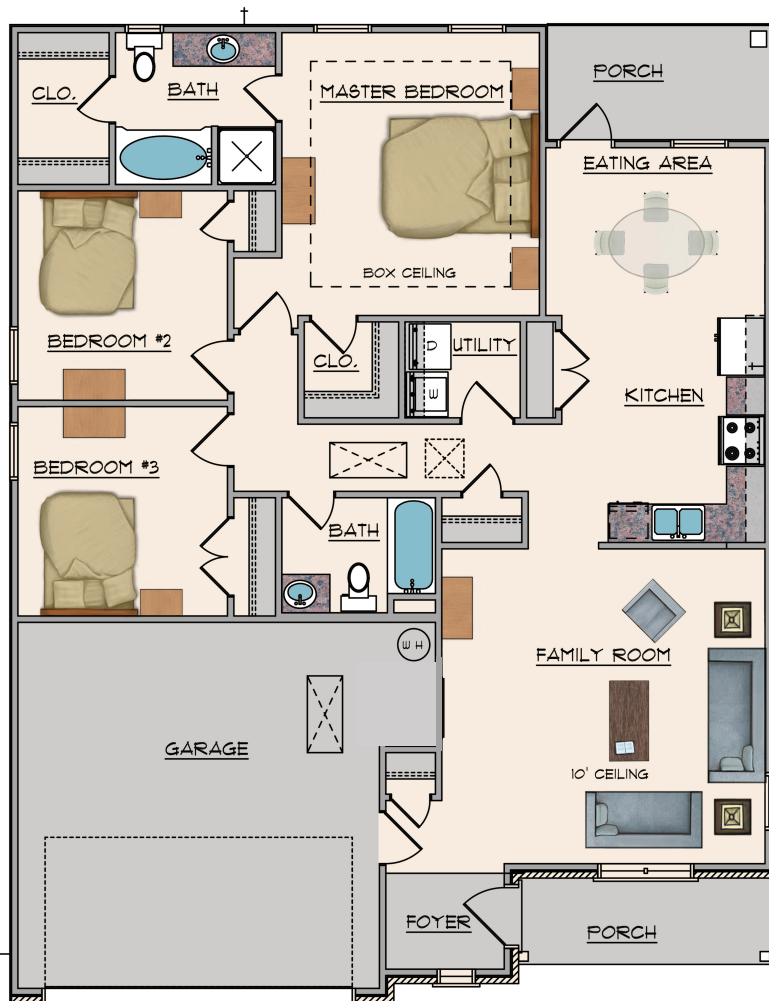
**Living: 1471 SF**  
**Garage: 427 SF**  
**Covered Front Porch: 56 SF**

- **3 Bedroom / 2 Bath**
- 2 Car Garage with Openers
- Spray Foam Insulation
- Heat Pump Hot Water Heater
- Very Open Floor Plan
- 10' Ceilings in Family Room
- Kitchen with Island & Breakfast Bar
- Wood Burning Fireplace
- Large Laundry
- ALL Walk-in Closets
- Separate Soaking Tub & Shower in Master
- Stainless Steel Appliances
- Ceiling Fans in Master & Family Room
- Maintenance Free Exterior
- High Efficiency Vinyl, Low E Glass Windows
- 500 Yards of Bermuda Sod with Shrubs, Shade Tree & Mailbox
- Termite Bond
- Builders Warranty for 1 Full Year



# THE CALIFORNIA

\$219,900



**Living: 1468 SF**

**Garage: 396 SF**

**Covered Front Porch: 59 SF**

**Covered Rear Porch: 70 SF**

- **3 Bedroom / 2 Bath**
- **2 Car Garage with Openers**
- **Spray Foam Insulation**
- **Heat Pump Hot Water Heater**
- **10' Ceilings in Family Room**
- **Kitchen with Breakfast Bar**
- **Separate Soaking Tub & Shower in Master**
- **His/Hers Master Closets**
- **Stainless Steel Appliances**
- **Ceiling Fans in Master & Family Room**
- **Maintenance Free Exterior**
- **High Efficiency Vinyl, Low E Glass Windows**
- **500 Yards of Bermuda Sod with Shrubs, Shade Tree & Mailbox**
- **Termite Bond Builders**
- **Warranty for 1 Full Year**



# THE ARIZONA

\$224,900



**Living: 1642 SF**

**Garage: 424 SF**

**Covered Front Porch: 12 SF**

**Concrete Patio: 160 SF**

- 4 Bedroom / 2 Bath
- 2 Car Garage with Openers
- Spray Foam Insulation
- Heat Pump Hot Water Heater
- Very Open Floor Plan
- 10' Ceilings in Family Room
- Kitchen with Island & Breakfast Bar
- Wood Burning Fireplace
- Large Laundry
- ALL Walk-in Closets
- Separate Soaking Tub & Shower in Master
- Stainless Steel Appliances
- Ceiling Fans in Master & Family Room
- Maintenance Free Exterior
- High Efficiency Vinyl, Low E Glass Windows
- 500 Yards of Bermuda Sod with Shrubs, Shade Tree & Mailbox
- Termite Bond
- Builders Warranty for 1 Full Year