

# *Cambridge Model*

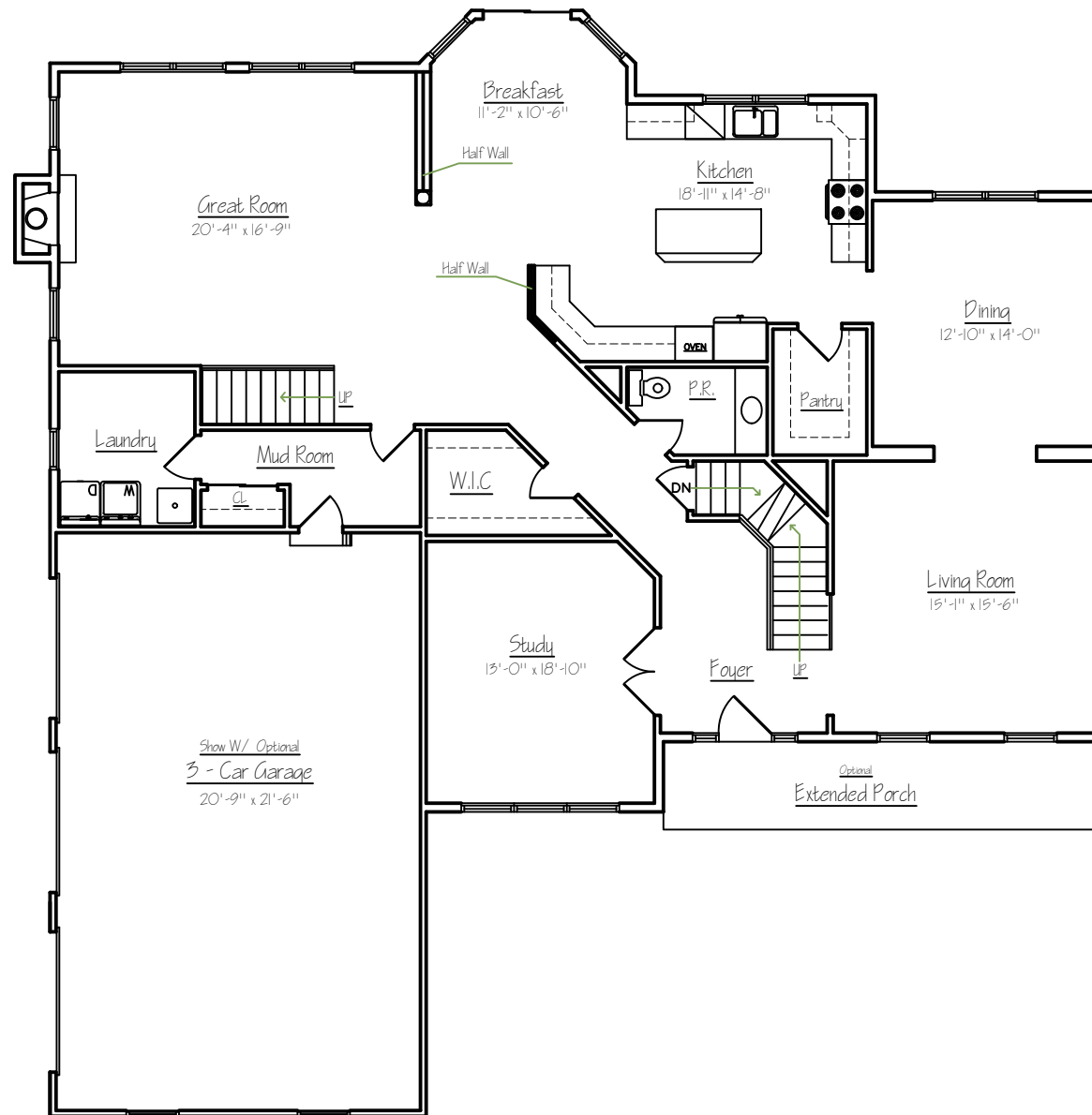


Shown with optional front porch, metal roof, front door with transom, and stone work. Landscape not included



(215) 343-3300

# The Cambridge Model

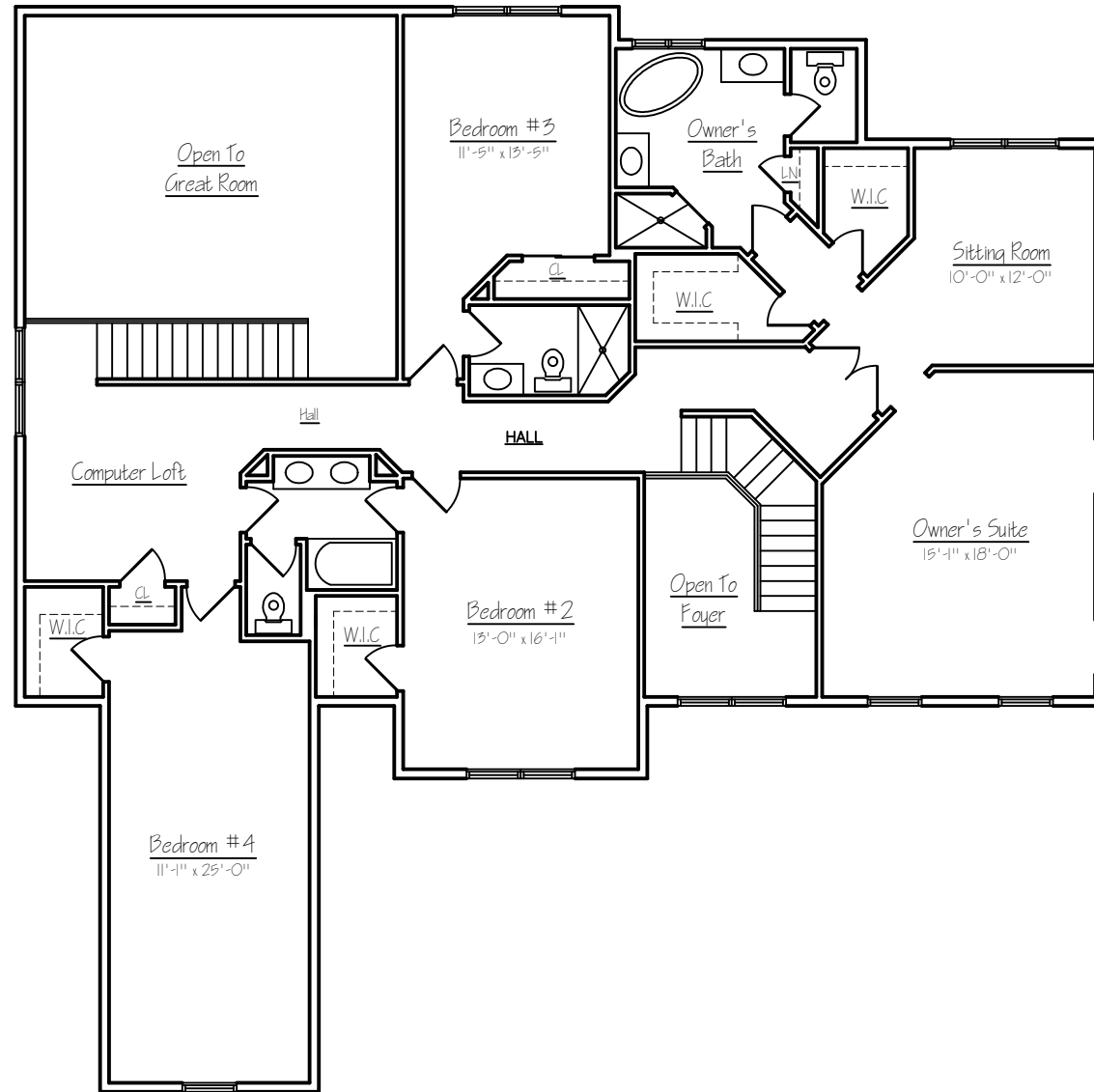


*First floor plan*  
*Sq. Ft.: 2040*  
*Total Sq. Ft.: 4000*

Illustrations and floor plans are artist's conceptual renderings. Details, colors and dimensions are subject to change and field verification. Window and front door locations and room dimensions may vary according to elevation. Mature landscaping not typical. Light fixture locations and window boxes not included. 4/6/23



# The Cambridge Model



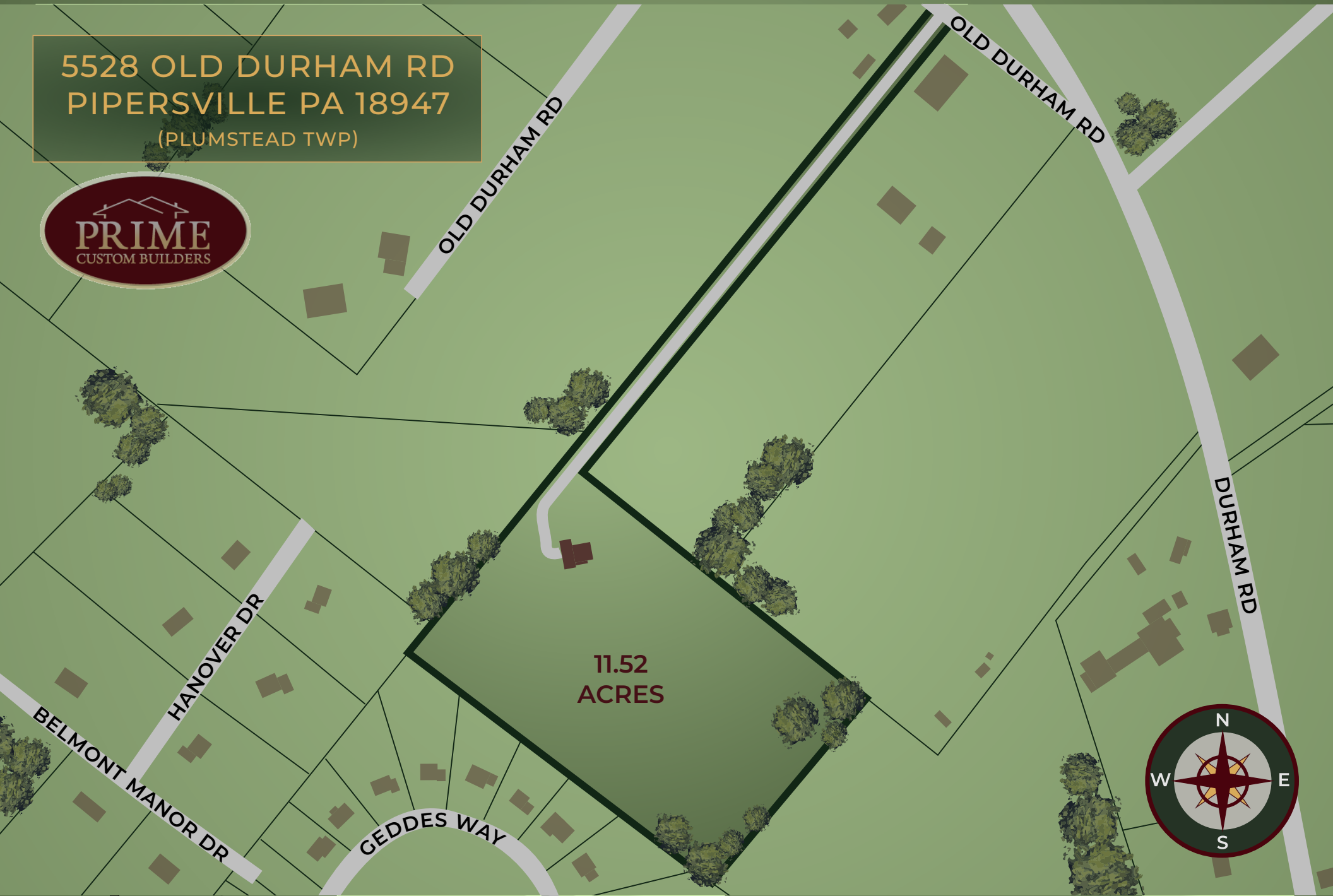
## Second floor plan

Sq. Ft.: 1960

Total Sq. Ft.: 4000

Illustrations and floor plans are artist's conceptual renderings. Details, colors and dimensions are subject to change and field verification. Window and front door locations and room dimensions may vary according to elevation. Mature landscaping not typical. Light fixture locations and window boxes not included. 4/6/23

5528 OLD DURHAM RD  
PIPERSVILLE PA 18947  
(PLUMSTEAD TWP)



11.52  
ACRES





(215) 343-3300

Suzanne Bentrim; Realtor  
525 N. Main Street, Doylestown, PA 18901  
sbentrim@corcoranass.com  
M: (215) 479-8854 | O: (215) 348-5600



## Cambridge Model - Standard Luxury Features

5528 Old Durham Rd, Pipersville (Plumstead Twp) 18947

### Community Benefits and Features

- Central Bucks School District
  - Groveland Elementary School
  - Tohickon Middle School
  - CB East High School
- Plumstead Township
- Private Water
- Private Sewer
- Two & three car side entry garages available

### Spectacular Interiors

- Nine foot ceilings in basement and on first floor
- Luxurious master suite with private sitting room, spacious walk in closets and lavish bath
- Spacious 2-story family room with gas fireplace
- Dramatic two-story foyer
- Elegant trim package including oversized baseboard & trim throughout the first floor and second floor hall, traditional chair rail in living room and dining room, crown molding in dining room and 2 panel doors throughout
- Finely crafted hardwood flooring in foyer, kitchen, breakfast area, and great room
- Wall to wall carpeting in an array of colors
- Oversized laundry/mudroom

### Gourmet Kitchens

- Sunny breakfast area
- Customize your kitchen with a design professional from Century Kitchens
- Choose granite countertops from an assortment of standard colors
- Under mount stainless steel sink
- Stainless steel General Electric appliances including energy saver dishwasher, self-cleaning oven and microwave
- Trash can/recycling drawer included

### Lavish Bathrooms

- Exquisitely detailed master bath with two Century vanities, oversized stall shower, and soaking tub available
- Ceramic tile flooring and shower surround in master bath
- 2nd floor hall bath to have ceramic tile flooring
- First floor powder room with pedestal sink, and beveled oval mirror

### Superior Construction & Energy Efficiency

- Steel I-beam construction
- 10" poured concrete basement with steel reinforcing
- Dual zone 92% high efficient furnaces & A/C
- Digital programmable thermostat for each zone
- Insulated fiberglass front door
- Full insulation with R-21 walls and R-49 ceilings
- Simonton Brickmold 300 series windows with Low E & Argon gas filled glass with screens

### Exteriors Features

- Your choice of a wide variety of low maintenance beaded vinyl siding & shutters

### Utilities and Conveniences

- Seamless aluminum gutters and aluminum downspouts
- Aluminum wrapped soffits and fascia
- Fiberglass architectural style roof shingles with 30-year warranty
- Frost-free hose connections at front & rear High efficiency air conditioning for maximum comfort
- High efficiency LP Gas heater
- 75-gallon water heater
- Laundry Room with washer & dryer hook ups & dryer vent
- Pex Plumbing water lines
- 200-amp electrical service

All information is deemed reliable but not guaranteed. Contents subject to errors and omissions.

In a continuing effort to improve our homes, Prime Custom Builders, LLC reserves the right to make changes and/or modifications to plans, elevations, specifications, features, colors and prices without prior notice. Last revision 9/19

# Cambridge Model



- ◆ 4 bedroom
- ◆ 3.5 Bathrooms
- ◆ 3,700 Sq Ft
- ◆ 2-3 Car Garage
- ◆ Impressive Owner Suite
- ◆ Turn this home into your dream home!



5528 Old Durham Rd, Pipersville (Plumstead Twp), PA 18947  
Proudly Offered at \$1,595,000



Suzanne Bentrim

525 N. Main Street, Doylestown, PA 18901

sbentrim@corcoranss.com

M: (215) 479-8854 | O: (215) 348-5600



(215) 343-3300